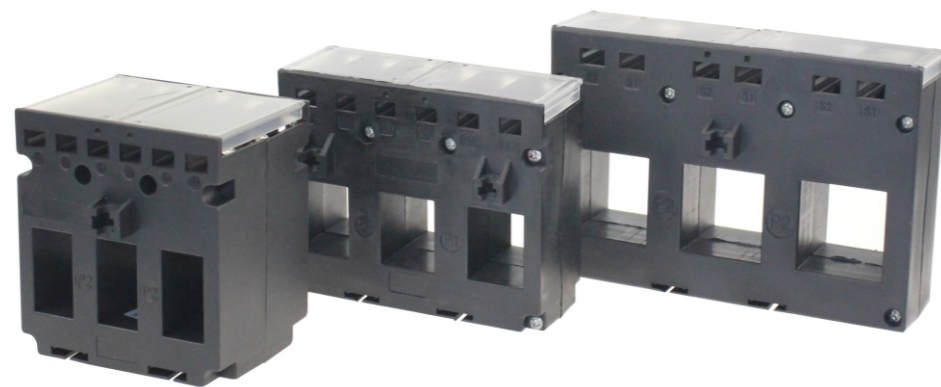


# ESCT-C Series 5A

## Solid Core 3-in-1 Current Transformers

- Double-screw fastening
- Easy installation
- wide inner window
- Class I Accuracy
- EN60044-1 Standard



### > Description

The Eastron ESCT-C series three phase current transformers have been designed to make the installation fast, safe and simple. There are three different frame sizes with 25mm, 35mm, 45mm center distance.

The ESCT-C series combined 3 single phase current transformer in 1 enclosure, which is compact in size and easy for installation. There are two fasten screws for each phase secondary current output wire on the top of the unit. It makes the wiring tight and safe. Wide and big window allows both current cable or bar go through the middle hole. Din rail kit is optional, which make the installation easier on Din rail.

### > Specifications

Frequency	50-60Hz
Rated current	100A to 630A loads
Rated output	1A (AC)
Accuracy	± 1% from 20% to 120% of rated current
Phase angle	less than 2 degrees at 50% of rated current
Insulation voltage	600Vac
Maximum primary voltage	5000Vac (Insulated Conductor)
Dielectric strength	2.5KV/1mA/1min
Operating temperature	-15°C to 60°C.
Operating humidity	< 85%
Case material	PC / UL94-V0

### > Specification

Size	Model	Ratio	Accuracy
	ESCT-C325	60/5	1.5
	ESCT-C325	100/5	1.5
	ESCT-C325	125/5	1.5
	ESCT-C325	150/5	1.5
	ESCT-C325	200/5	1.5
	ESCT-C335	60/5	1.5
	ESCT-C335	100/5	1.5
	ESCT-C335	125/5	1.5
	ESCT-C335	200/5	1.5
	ESCT-C335	250/5	1.5
	ESCT-C345	250/5	2.5
	ESCT-C345	300/5	2.5
	ESCT-C345	400/5	2.5
	ESCT-C345	500/5	2.5
	ESCT-C345	600/5	2.5
	ESCT-C345	630/5	2.5